



# THE EXTINCTION AT THE NORIAN/RHAETIAN BOUNDARY: BIOTIC AND GEOCHEMICAL EVIDENCES

Prof. **MANUEL RIGO**

Department of Geosciences - University of Padova, Italy

[manuel.rigo@unipd.it](mailto:manuel.rigo@unipd.it)

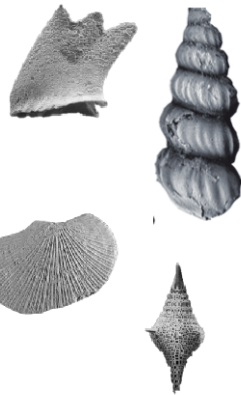
- conodonts

- ammonoids

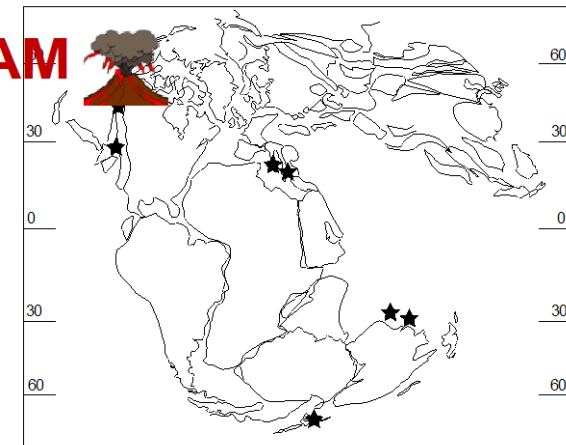
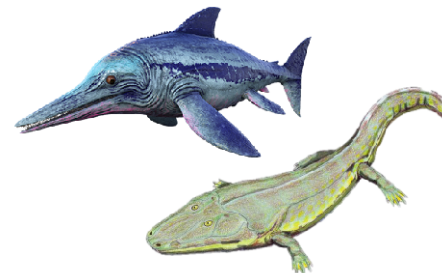
- bivalves

- radiolarians

- marine and terrestrial vertebrates



**ANGAYUCHAM**



**CRISES  
AHEAD**